



MATT BLACK PRODUCT RANGE

Electroplated

9082 Lever Handle



PASSAGE



ENTRANCE



PRIVACY

Also available in SC, CP.

Sliding Cavity Door Lock

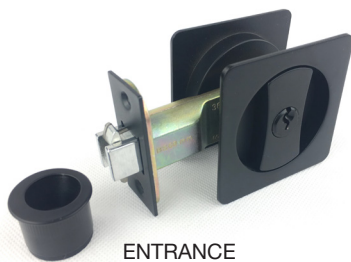


ENTRANCE



PRIVACY

Also available in Passage Set



ENTRANCE



PRIVACY

Also available in SSS, PSS.

MATT BLACK PRODUCT RANGE

Electroplated

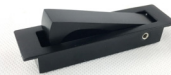
Accessories



Door Pull: 450x30x15mm
600x30x15mm



Door Edge Pull 25mm



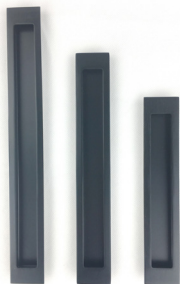
Door Edge Pull 80x22mm



Flush Bolt 150mm



Dual Spring Drive in Latch



Flush Pull: 200x37mm
250x37mm
300x37mm



Flush Pull: 120x50mm
150x50mm
200x60mm



Flush Pull: 150x50mm



Door Stop 85mm



Door Stop 85mm



Door Stop Ø46mm



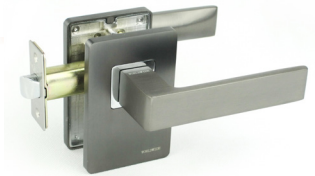
SATIN BLACK NICKEL PRODUCT RANGE

Electroplated

9082 Lever Handle

ergoloc

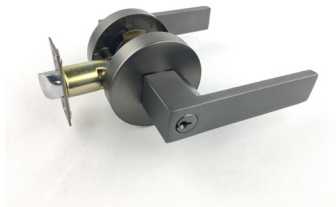
elegant design | comfortable holding



Avoca



Elgin



9082 Entrance



9082 Privacy

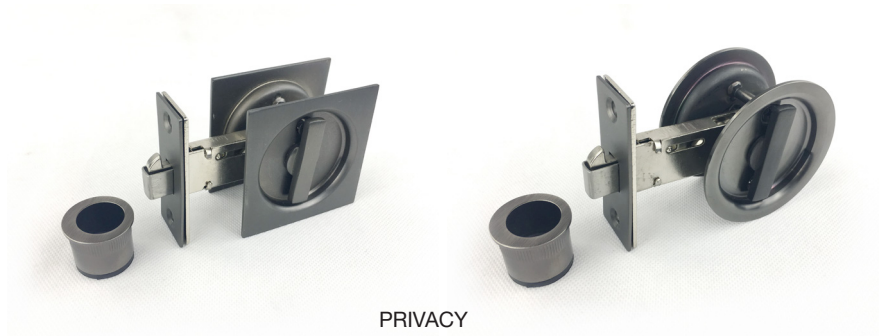


9082 Passage

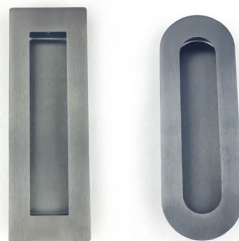
Sliding Cavity Door Lock



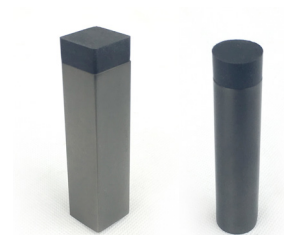
Door Pull: 450x30x15mm
600x30x15mm



PRIVACY
Also available in Passage Set



Flush Pull: 150x50mm



Door Stop 85mm

MATT BLACK HINGES

Electroplated

Radius Hinge 89x57x1.6mm



LH



RH

Butt Hinge 85x60x1.6mm



LH



RH

Architectural Hinge 100x75x2.5mm



LH



RH

Architectural Hinge 100x100x2.5mm



Ball Bearing
Quick Fix SS Hinge
100x72x2.5mm



Available Sizes:
8Gx19mm
8Gx25mm
10Gx30mm